



Part number

JCVI 24 L



Brief description:

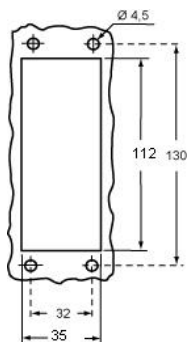
bulkhead mounting housings with single lever, size "104.27", metal version, IP66

Product description		Approvals / Standards	
Version	JEI@-V enclosures	Quality mark	 (type:4/4X/12),  , EAC
Series	bulkhead mounting housings with 1 lever	Conformity	CQC, CE
Product type	with 1 lever in galvanised steel	General ordering information	
Family	Enclosures JEI@ series, zinc plated levers	EAN13 code	8015747137614
Size	size "104.27"	Tariff number	85369095
Technical data		Packaging Information	
Material	metal	Packaging length	175,00 mm
IP degree of protection	IP66 (and IP69K DIN 40050 - 9)	Packaging height	195,00 mm
Further technical details		Packaging width	260,00 mm
Weight	163,00 g	Packaging weight	3,55 kg
		Packaging volume	8,87 dm ³
		Packaging description	Carton box
		Packaging quantity	20 Pcs
		Packaging EAN code	8015747143998
		Sub-packaging weight	0,89 kg
		Sub-packaging description	Plastic packaging
		Sub-packaging quantity	5 Pcs
		Sub-packaging EAN barcode	8015747140171

Part number
JCVI 24 L

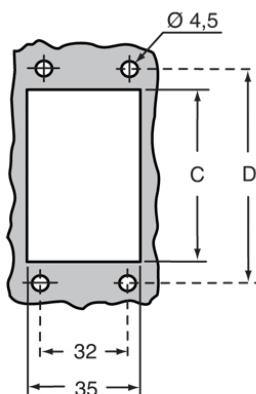
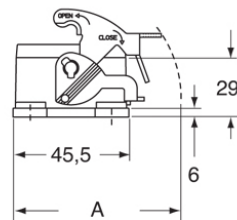
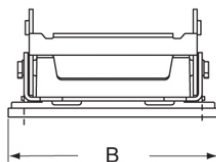


Catalogue drawings



Catalogue drawings

JCVI L



	A	B	C	D
JCVI 06 L	66	82,5	52	70
JCVI 10 L	70	95,5	65	83
JCVI 16 L	70	115,5	86	103
JCVI 24 L	70	142,5	112	130